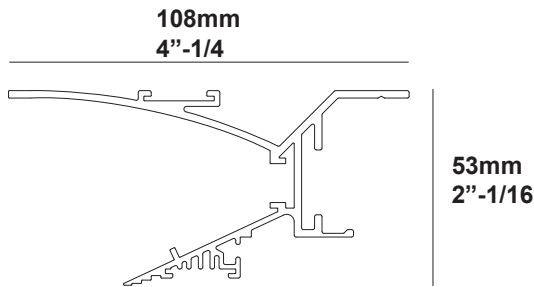


BL - PROFILE ◇

6 371 00 00◇

◇ = W



Application

Ceiling/Wall recessed mounted
For indoor use only

Color finish

W - White

Specification features

Surface treated aluminum
Input voltage: 24V-DC
Class 2, 2 x 22AWG OR 4 X 22AWG cable 2' included.
MAX. lenght profile : 6m = 19'
Suitable for dry or damp locations
Protected against solid objects greater than 12 mm ➔ IP20
Weight: 3,3lbs | 1,5kg

Dimensions

Height: 53 mm = 2" - 1/16
width: 108 mm = 4" - 1/4

Accessories

BL - CORNER 180°	371 06 01
BL - CORNER 90° INT	371 06 06
BL - CORNER 90° EXT	371 06 16

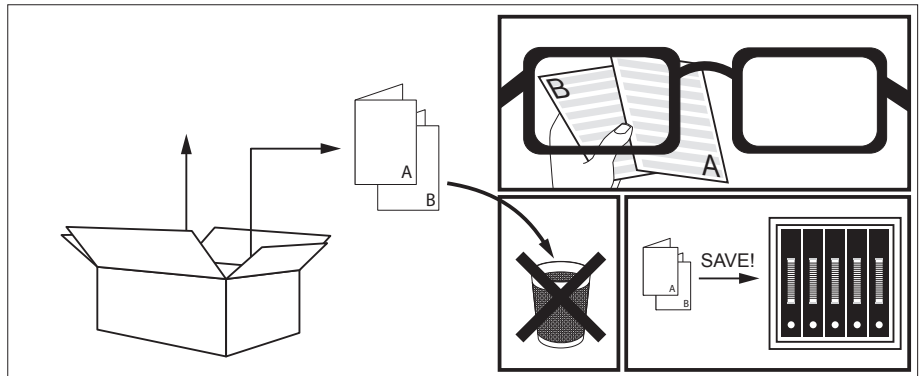
Optional

LED POWER SUPPLY 24V-DC / 10W	6 300 89 24 10 U
LED POWER SUPPLY 24V-DC / 25W	6 300 89 24 25 U
LED POWER SUPPLY 24V-DC / 25W DIM8	6 300 89 24 25 ED8
LED POWER SUPPLY 24V-DC / 60W	6 300 89 24 60 U
LED POWER SUPPLY 24V-DC / 25W DIM8	6 300 89 24 25 ED8



INSTALLATION LUMINAIRE

Accessory set



1 BL - CORNERS

EXAMPLE: CORNER 90° EXT

INSTALLATION INSTRUCTIONS
 01. SLIDE CORNER IN PROFILE 1
 02. SLIDE PROFILE 2 ON CORNER

Diagram showing the installation of a corner accessory into a profile. Step 01 shows the corner being inserted into Profile 1. Step 02 shows Profile 2 being slid onto the corner.

BL - CORNER 180°
 371 06 01

BL - CORNER 90° INT
 371 06 06

BL - CORNER 90° EXT
 371 06 16

Each corner type is accompanied by an illustration of the 'ACCESSORY SET' (x2).

2 BL - POSITIONS FOR INSTALLATION

SIDE

INSTALLATION INSTRUCTIONS
 01. PLACE PROFILE ON CEILING
 03. FIX PROFILE
 04. FINISH CEILING

Diagrams showing the profile being installed on a ceiling and then fixed to a wall. Steps 01, 02, 03, and 04 are indicated.

UP

INSTALLATION INSTRUCTIONS
 01. PLACE PROFILE ON WALL
 03. FIX PROFILE
 04. FINISH WALL

Diagrams showing the profile being installed on a wall and then fixed to a ceiling. Steps 01, 02, 03, and 04 are indicated.

3 BL - ELECTRICAL CONNECTION WITH LEDSTRIPS

LEDSTRIP RGB

CAUTION
 class 2 power limited circuits only
 ATTENTION
 seulement pour reseaux class 2,
 a puissance limite

24Vdc

LEDSTRIP

CAUTION
 class 2 power limited circuits only
 ATTENTION
 seulement pour reseaux class 2,
 a puissance limite

24Vdc

24Vdc
COMMON + = BLACK / NOIR
RGB
R = RED / ROUGE
G = GREEN / VERT
B = WHITE / BLANC

WARNING ⚠️
 ONLY CLASS 2 CIRCUITS!!

Diagrams showing the connection of the LED strip wires to a terminal block. The wires are labeled R, G, B, and +24V.

4 BL - CLEANING

CLEANING THE LUMINAIRE MUST BE SWITCHED-OFF AND COOL BEFORE BEING CLEANED. CLEANING OF LUMINAIRES: A DAMPENED SOFT CLOTH IS TO BE USED. CLEANING OF PLASTICS: USE A SOFT CLOTH AND A STANDARD pH-NEUTRAL, ALCOHOL FREE NON-SCOURING DETERGENT. CLEANING OF REFLECTORS: USE A SOFT CLOTH AND A STANDARD pH-NEUTRAL, ALCOHOL FREE NON-SCOURING DETERGENT.



INSTALLATION LUMINAIRE

Ledflex

16' - 24V-DC [0.7]



White

RGB

Dividable per 4"
60 smd LED/3'

Dividable per 1"
180 smd LED/3'

Dividable per 6"-9/16"
30 smd LED/3'

5W/3'
360lm/3'

15W/3'
1000lm/3'

22W/3'
1800lm/3'

8W/3'



4000K				
	IN	LEDFLEX IN NW 300 91 52 04	LEDFLEX IN FP NW 300 91 53 04	
	OUT IP65	LEDFLEX OUT NW 300 91 62 04	LEDFLEX OUT FP NW 300 91 63 04	
3000K				
	IN	LEDFLEX IN WW 300 91 52 02	LEDFLEX IN FP WW 300 91 53 02	LEDFLEX IN HP WW 300 91 54 02
	OUT IP65	LEDFLEX OUT WW 300 91 62 02	LEDFLEX OUT FP WW 300 91 63 02	
2700K				
	IN	LEDFLEX IN HW 300 91 52 03	LEDFLEX IN FP HW 300 91 53 03	LEDFLEX IN HP HW 300 91 54 03
	OUT IP65	LEDFLEX OUT HW 300 91 62 03	LEDFLEX OUT FP HW 300 91 63 03	
RGB				
	IN			LEDFLEX IN RGB 300 91 52 33
	OUT IP65			LEDFLEX OUT RGB 300 91 62 33
FULL INFO / PAG TEC				
LED POWER SUPPLY 24V-DC / 40W DIM1 6 300 89 24 40 ED1		max.26' 1/4	max.8' 1/2	max.5' 15/16
LED POWER SUPPLY 24V-DC / 60W DIM1 6 300 89 24 60 ED1		max.39' 5/16	max.13' 1/8	max.9' 1/16 (max.9' / Powerline)
LED POWER SUPPLY 24V-DC / 90W DIM1 6 300 89 24 90 ED1		max.59' 1/16	max.19' 11/16	max.12' 1/8 (max.9' / Powerline)

DIM1: dimming by 1-10V